

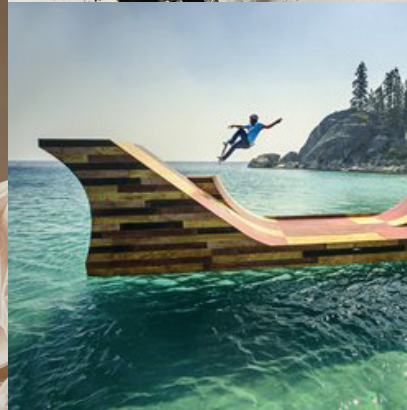
IMPULSE

TEXWORLD NEW YORK
TRENDS PREVIEW
AUTUMN - WINTER 2015-16

SPONTANEOUS ATTRACTION

© Thinkstock

© Thinkstock



A Perfect Vacuum
2011, Oil on Board, 20 x 35 inches. © Jeremy Geddes

© Bob Burnquist floating skateramp by Jerry Blohm and Jeff King for Visit California. <http://media.visitcalifornia.com>

© Rein Vallenga

We questioned the origins. Time and structure. Science and myth. For fear of the irremediable, we searched for a secure path. But history bears no answer. Driven by the impossible immobility, we move on. The need to create tomorrow was too strong. We reject the fainthearted approach. We need to soar. A jump off the edge with agnostic conviction. With the violence of despair, we shatter the mirror of our time. The world promises us a dead end, but we refuse to turn back. Tomorrow exists, since it is calling to us. The cocoon had become too small, the take-off inevitable. The future shall be written with the energy of freedom.



RISKY FLIGHT
17-4435 TPX / 17-4435 TCX / 7689 C

FERVENT PLUNGE
19-1764 TPX / 19-1764 TCX / 7636 C

INSTINCTIVE COMBUSTION
15-1263 TPX / 15-1263 TCX / 151 C

SPINNING SPARK
14-1159 TPX / 14-1159 TCX / 1375 C

YELLOWISH BRANDING
14-0852 TPX / 14-0852 TPX / 123 C

LIBRISTE GREEN
13-6009 TPX / 13-6009 TCX / 572 C

OXIDIZED HOPE
14-5413 TPX / 14-5413 TCX / 564 C

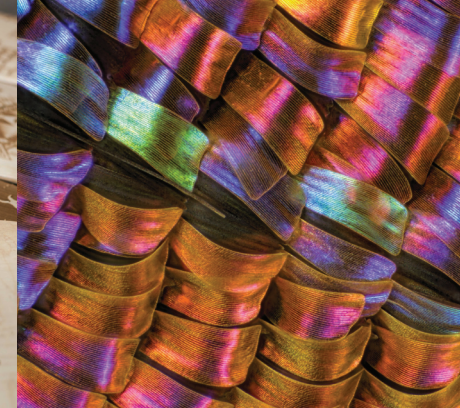
IRRADIATED FUTURE
17-5641 TPX / 17-5641 TCX / 3278 C

CARBON SWIFTNES
18-0306 TPX / 18-0306 TCX / 425 C

BRUTAL POETIZING

Councillor IV
© John Pusateri - www.johnpusateri.com

Hard Candy Armchair
MDF, cardboard, polyurethane, 2013
© Jojo Chuang - <http://cargocollective.com/jojochuangdesign.com>



It's always happening right now even after, 2012 [detail]
hand cut Dura-lar, latex caulking, and steel - 28 x 17 x 8 inches 71.1 x 43.2 x 20.3 cm
Courtesy the artist and Marianne Boesky Gallery, New York.
© Mindy Shapero

Wooden skate laser engraving
© Magnetic Kitchen - www.magnetickitchen.com

Wing scales of a Madagascan sunset moth (Chrysidia rhipheus)
© Charles Krebs

Redefinition has failed. We were not able to rewrite our essence and we must accept its weaknesses. Rather than just accepting them, we decided to glorify them. To poetize them. Creating beauty from scrap. We embrace what we reject. Mud has become clay and we mold it to reflect our desires. Material in its rough state becomes our deeper inspiration. Without changing, it reveals its hidden beauty. These qualities, that we were not capable of seeing, thrive and transcend. Without judgment, we embrace the being in its entirety in a creative outburst. From now on poetry is written without subtlety.



BRONZE IRIS
14-1038 TPX / 14-1038 TCX / 7508 C

MACABRE NECTAR
18-3015 TPX / 18-3015 TCX / 5135 C

MANUFACTURED OUD
19-0712 TPX / 19-0712 TCX / 439 C

HEAVENLY CASE
12-4609 TPX / 12-4609 TCX / 552 C

IMPERIOUS COBALT
18-4535 TPX / 18-4535 TCX / 640 C

CAPTIVATING VITALITY
18-5725 TPX / 18-5725 TCX / 626 C

FLUORIDATED NOTE
13-0550 TPX / 13-0550 TCX / 382 C

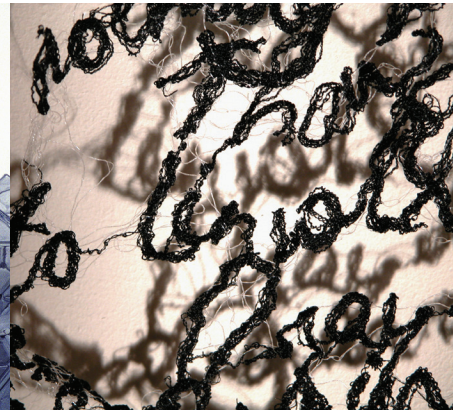
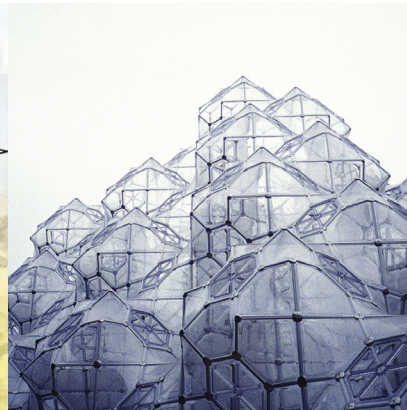
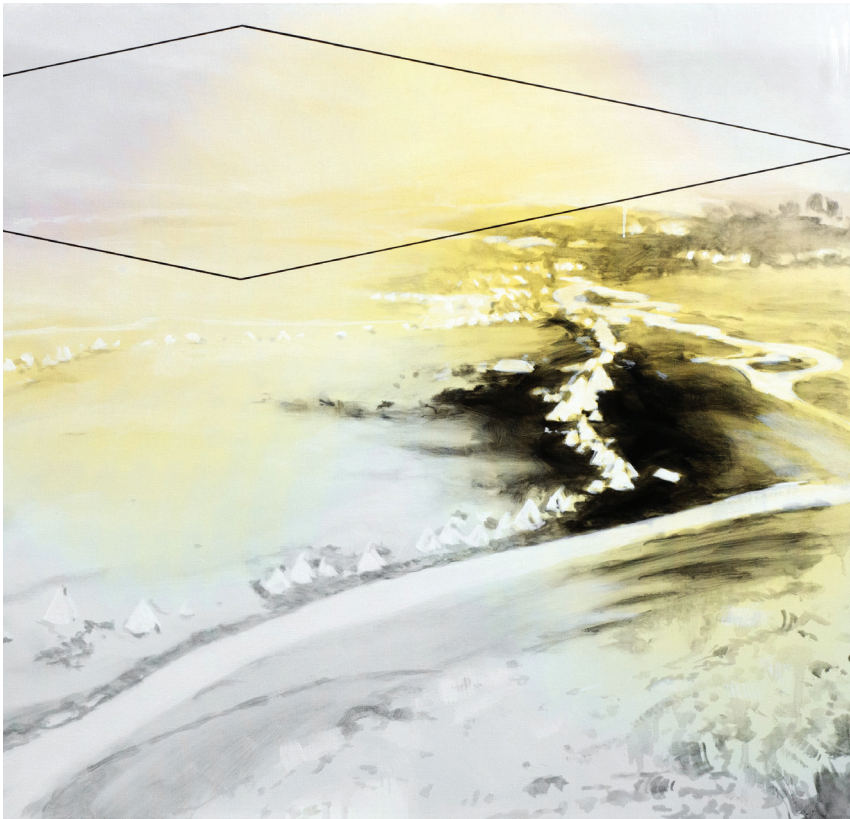
BLOOMING CARRION
18-1663 TPX / 18-1663 TCX / 193 C

CRIMSON PROSE
17-1831 TPX / 17-1831 TCX / 7635 C

INNOCENT APPROPRIATION

photograph © Ariel Claudet - arielclaudet.tumblr.com

Shadows, 2009
© Donna Rumble-Smith - <http://www.donna-rumble-smith.co.uk>

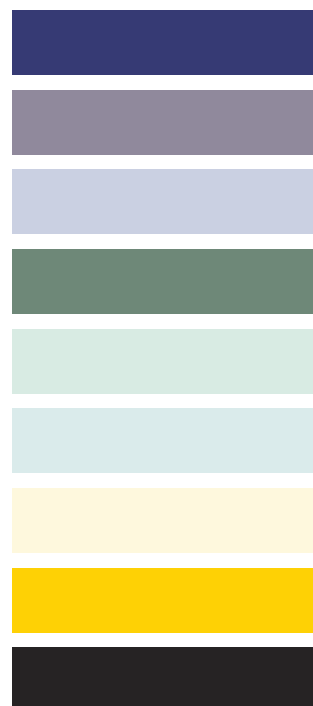


Halo (Nez Perce)
Oil and India ink on linen, 60 x 40", 152 x 101cm, 2011 © Eric LoPresti

Pseudo Male
© Tim A Shaw - www.timashaw.com

Color studies
© Aldo Tolino - www.aldotolino.com

We tried to erase ourselves from our own world. To let creation happen without meddling with it. But as we now know, creation is vital to us. To limit our impact, matter is no longer processed. It is composed. Takes shape. But man no longer distorts it. A compulsive but nonintrusive creativity. A control of the rough state, touching the form without influencing the content. As if nature itself had taken an avid interest in the apparent superficiality of beauty. We will not do better than the existing, we can only show it off to its advantage. Modern creation renders the being's essence sacred once more, merely allowing an impact to the outer shell, animistic respect of natural perfection.



BLACK LIGHT
19-3731 TPX / 19-3731 TCX / 5265 C

INTRA-VIOLET
16-3304 TPX / 16-3304 TCX / 7660 C

QUARTZ FOG
14-3903 TPX / 14-3903 TCX / 5305 C

PATINATED AGATHE
17-0210 TPX / 17-0210 TCX / 5625 C

OPALINE SPLENDOR
12-6208 TPX / 12-6208 TPX / 621 C

INGENUOUS INSPIRATION
13-4405 TPX / 13-4405 TCX / 5523 C

SOLAR WASH
11-6717 TPX / 11-6717 TCX / 7499 C

HARMLESS SULPHUR
14-0760 TPX / 14-0760 TCX / 116 C

PROFANE KOHL
19-4005 TPX / 9-4005 TCX / 426 C

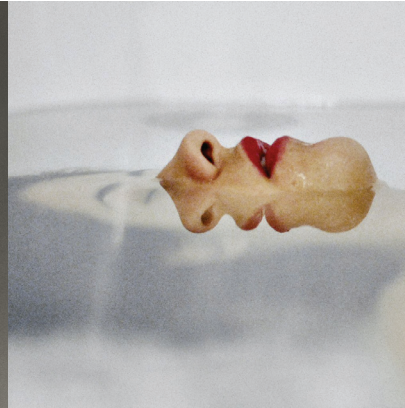
ANONYMOUS QUINTESSENCE

© Valeria Schettino - <http://valeriaschettino.wix.com>

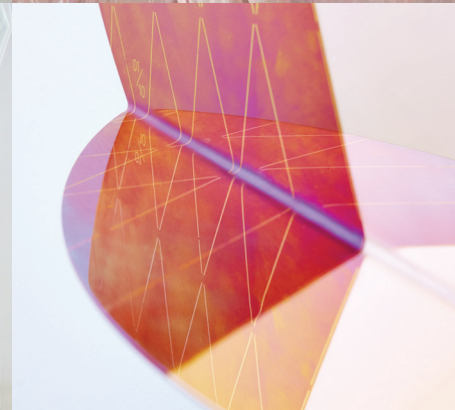
Anonymous women
© Patty Carroll - www.patty Carroll.com



© Gunter Rambow - www.gunter-rambow.com



Un memory
© Lucas Simoes



Iridescent Copper Mirror
© Studio Besau-Marguerre - www.besau-marguerre.de

We are aware of the fact that our situation is due to our identity, arises from our essence. But we have failed to change. What remains is a choice to be made between latent self-destruction and immediate redefinition. We chose the erasure of the material being and the hope of change of the immaterial, of immanent identity. The mirrors reflection shows an overly clear, intolerable image. A reality which we refuse. We will not change who we are, so we tackle appearance. Visual differences grow blurred, giving up the sphere of identity for our intrinsic similarities. We rely on a simple image, reflection of our common sense of belonging, for a united tomorrow. We thought that we would assert our resemblances by observing our common roots, but in projecting ourselves in the branches of tomorrow, we become aware of our humanity.



IN - CARNATION
16-1617 TPX / 16-1617 TCX / 493 C

CONCEALED FLESH
14-1905 TPX / 14-1905 TCX / 503 C

IMPARTIAL FUSION
16-1350 TPX / 16-1350 TCX / 7577 C

PHYSICAL PLEASURE
19-2047 TPX / 19-2047 TCX / 7434 C

SPECTRAL PRESENCE
12-0404 TPX / 12-0404 TCX / 7527 C

EVANESCENT REFLECTION
14-4102 TPX / 14-4102 TCX / 428 C

IMPASSIVE SMALT
18-4032 TPX / 18-4032 TCX / 647 C

SECRET PSYCHE
16-3919 TPX / 16-3919 TCX / 535 C

DELIBERATE AMNESIA
19-3908 TPX / 19-3908 TCX / 432 C